

An Introduction To Backing Up Your Files To CD.

There are many ways to burn a data CD. The most suitable piece of software is Nero Express which can be found on all CompSci systems at the following location:

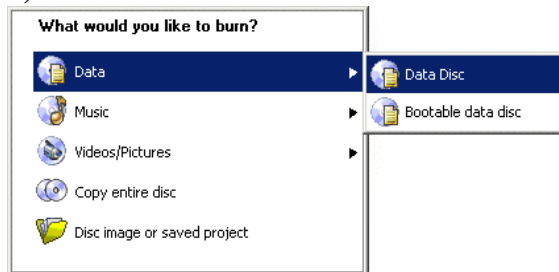



This sheet gives a brief explanation of the options for a user.

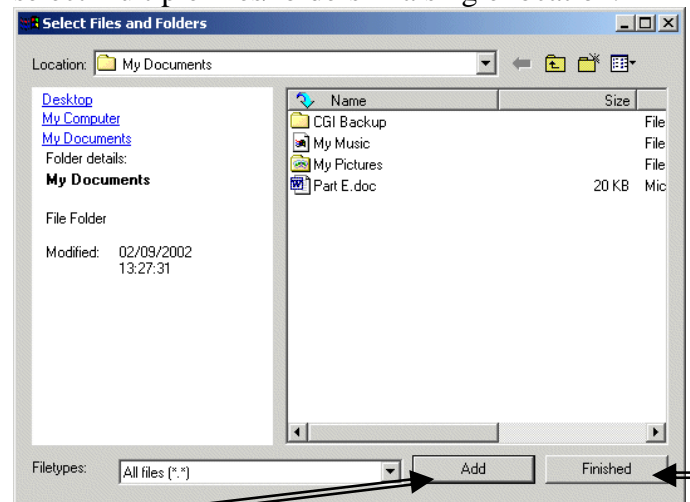
The college does not endorse music/software piracy.

These guides have been created to help with legitimate use.

1) At the *Menu Screen* choose **Data > Data Disk**



2) Click the  **Add** button to activate the file dialog box from which you can select all the files and folders you want to back up. Hold **CTRL** or **Shift** to select multiple files/folders in a single location.



Click **Add** to include items in your Burn list. When you have selected all necessary folders click **Finished**.

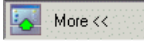
3) At the *Final Burn Screen* your options are:

Current Recorder – To burn a CD choose the drive from the drop down list e.g. F:\. To save an 'Image' of the chosen files to your hard drive which you can then burn choose the **Image Recorder**. This is useful when saving large files from a Network Drive as network speed can affect burn quality.

Disc Name – Select a title for your disc.

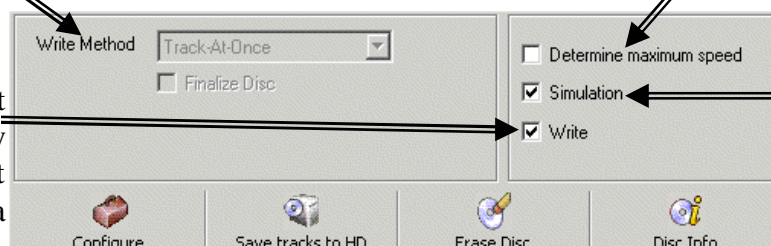
Writing Speed – Choose 24x or 8x. Lower speeds are more suitable for large files.

Number Of Copies – How many copies to burn.

4) Click the  **More <<** button at the bottom of the *Final Burn Screen*.

The **Write Method** concerns audio tracks. It is not required for data files.

The **Write** option must be checked to actually burn a CD. If it is left blank, you can still run a simulation.



The **Speed Test** looks at file access speed. If the access speed is slower than the burning speed, the burn speed is reduced to avoid a buffer underrun which ruins the CD.

The **Simulation** runs all steps except activating the laser beam. If it proves successful then the actual CD burn should be also.